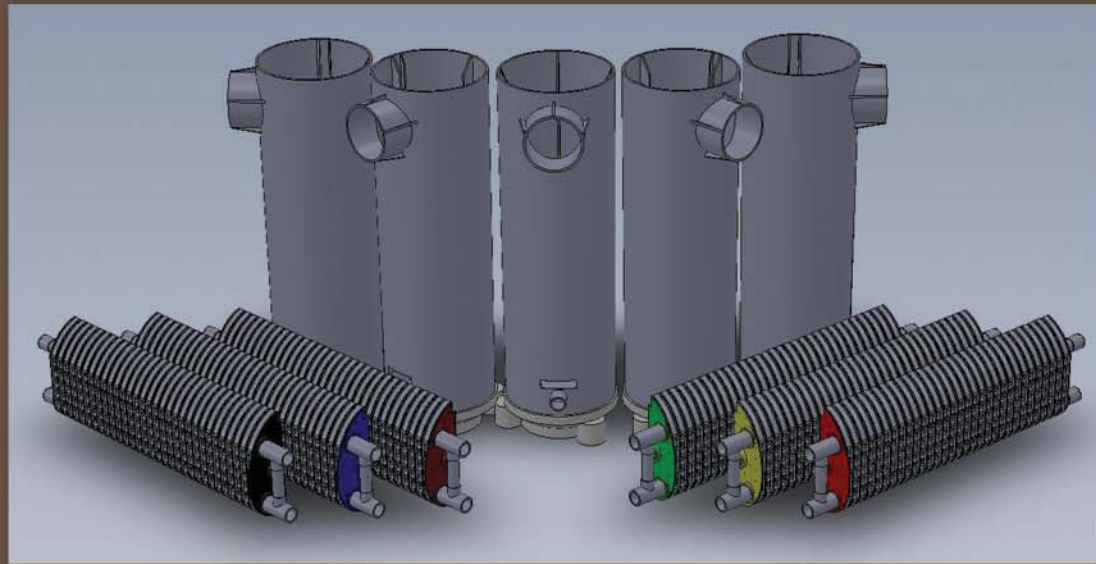
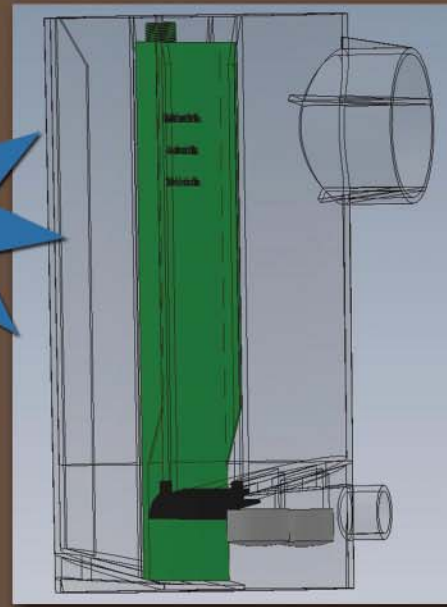


What's New from Bear Onsite?



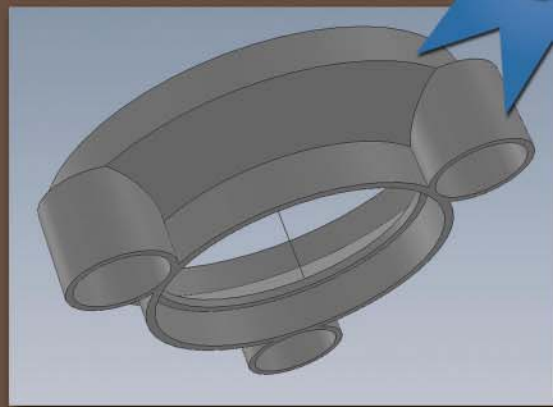
Coming in 2012 - High Capacity Filters!

Available NOW



Maintenance Plate

Available NOW



Case Adapter

Fall 2011

New Effluent Screen and Filter (BS-420 and ML2-420) and the NEW Revolutionary Uni-Tee™ Baffle!

Sizing Chart

Case & Cartridge	Lid Color Code	Single Family Application in GPD	Other than single family applications in GPD			Primary Filtration Size	Secondary Filtration Size	Tertiary Filtration Size
			<300 CBOD ⁵	300 - 600 CBOD ⁵	601 CBOD ⁵			
RESIDENTIAL								
ML3-910	Black	3350	3000	2500	2000	7/32 nd in	5/32 nd in	3/32 nd in
ML3-916	Blue	2750	2750	2000	1500	3/16 th in	1/8 th in	1/16 th in
SPECIALTY APPLICATIONS								
ML3-925	Brown	2750	2750	2000	1500	~1/6 th in	~1/10 th in	~1/25 th in
ML3-932	Green	2750	2750	1875	1500	1/20 th in	1/26 th in	1/32 nd in
COMMERCIAL/INDUSTRIAL - ULTRA FILTRATION								
ML3-948	Yellow	n/a	3000 *	2000 *	1500 *	~1/25 th in	~1/36 th in	~1/48 th in
ML3-964	Red	n/a	2750 *	1875 *	1500 *	~1/29 th in	~1/45 th in	1/64 th in

* Audio Visual Alarm is recommended due to the extreme level of filtration and the subsequent short service interval for these commercial/industrial filters.

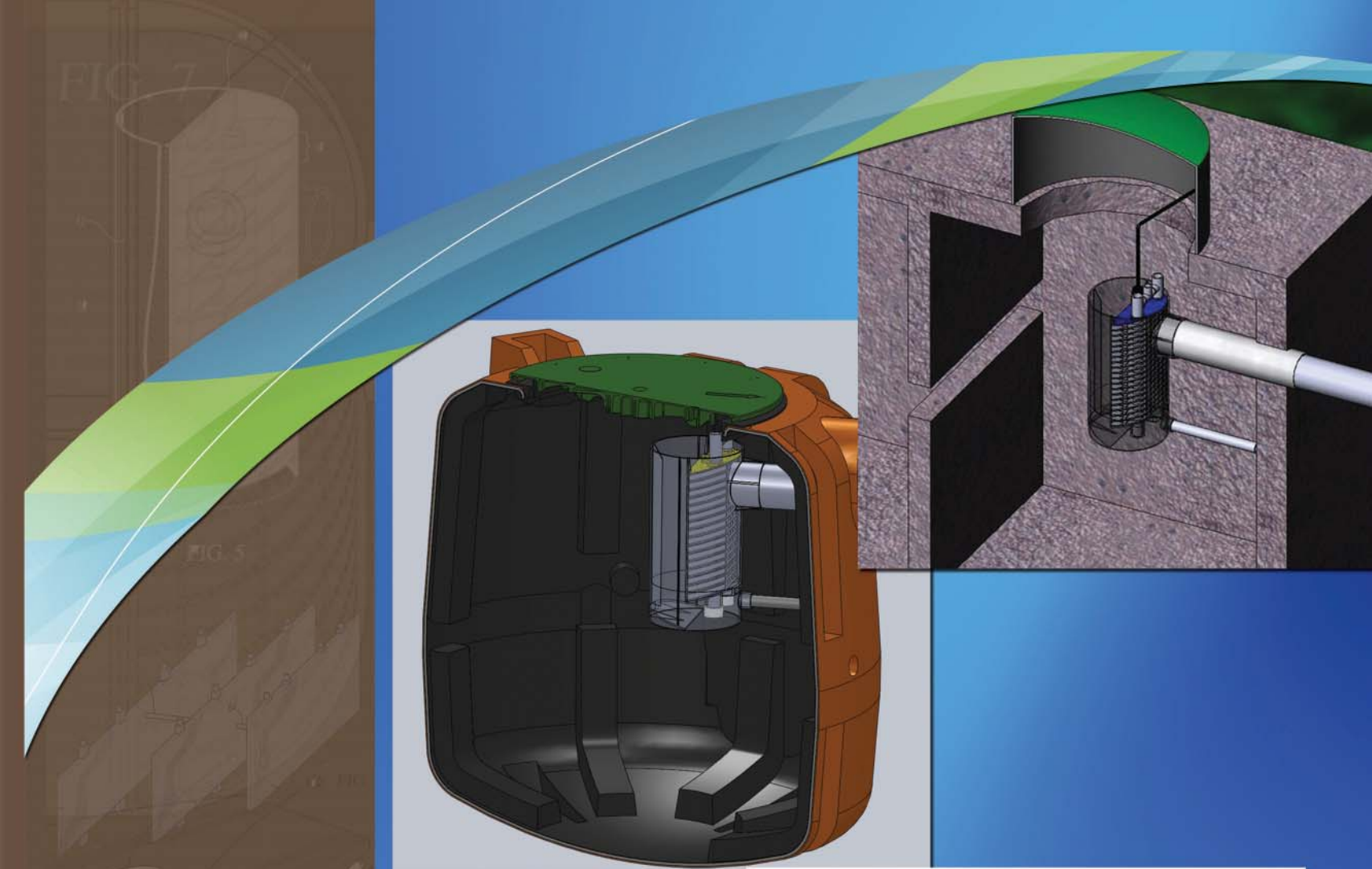
Specifications

Case & Cartridge	Lid Color Code	Primary Filtration Size	Linear FT of Weir	Secondary Filtration Size	Linear FT of Weir	Tertiary Filtration Size	Linear FT of Weir	Settling Area
RESIDENTIAL								
ML3-910	Black	7/32 nd in	93.29 FT	5/32 nd in	94.18 FT	3/32 nd in	49.02 FT	527.63 in ²
ML3-916	Blue	3/16 th in	93.29 FT	1/8 th in	94.18 FT	1/16 th in	49.02 FT	527.63 in ²
SPECIALTY APPLICATIONS								
ML3-925	Brown	~1/6 th in	93.29 FT	~1/10 th in	94.18 FT	~1/25 th in	49.02 FT	527.63 in ²
ML3-932	Green	1/20 th in	93.29 FT	1/26 th in	94.18 FT	1/32 nd in	49.02 FT	527.63 in ²
COMMERCIAL/INDUSTRIAL - ULTRA FILTRATION								
ML3-948	Yellow	~1/25 th in	98.2 FT	~1/36 th in	99.13 FT	~1/48 th in	51.6 FT	555.4 in ²
ML3-964	Red	~1/29 th in	98.2 FT	~1/45 th in	99.13 FT	1/64 th in	51.6 FT	555.4 in ²

Open Area for Gas Transport Above Water Level For Effluent Filters During Operation in Square Inches

Case & Cartridge	Lid Color Code	Zone				Open Area out of the Septic Tank w/2" Head	Open Area out of the Septic Tank w/2" Head
		Zone 1	Zone 2	Zone 3	Zone 4		
RESIDENTIAL							
ML3-910	Black	31.8	18.38	10.5	6.56	3.75	15.9
ML3-916	Blue	31.8	15.75	9	4.38	2.5	15.9
SPECIALTY APPLICATIONS							
ML3-925	Brown	31.8	14	8	2.8	1.6	15.9
ML3-932	Green	31.8	4.2	2.4	2.19	1.25	15.9

* Add 0.95 Square Inches to Zone 2 for an Alarm Port when appropriate.



Bear Onsite™ Filters Now Installed in

Quanics
Engineering Water Solutions

Better Quality. Better Performance.



Effluent Filter Systems

Revolutionary Products for the Wastewater Industry

Warranty information available online at www.bearonsite.com/filters.htm

All products as well as molds to produce products Made in the USA

Products shown protected by Patent No. 7,682,512. Other patents pending.



Good, better...Best.
And now, introducing the first true effluent filters.
Sometimes Evolution Leads to a Revolution

A successful onsite system starts with a quality pre-treatment tank that is structurally solid and does not leak. At the core of that pre-treatment tank is the ML3 effluent filter, increasing both the efficiency of solids' digestion and preventing excessive solids from entering the treatment and/or dispersal system.

For several decades now, it's been known that effluent screens keep solids from leaving the pre-treatment tank. However, recent studies have suggested that these screens may also inhibit gases from exiting the pre-treatment tank as well.

With concrete tank deterioration becoming an issue in several parts of the country, some companies are theorizing this may be a result of the buildup of hydrogen sulfide gas at the water line. Some have even suggested that decreased gas transport, resulting from the use of screens with little or no open area in the case or in the screens themselves, could contribute to the deterioration. Others are concerned that the lack of venting for these devices is also restricting the flow of oxygen out to the treatment field or media.

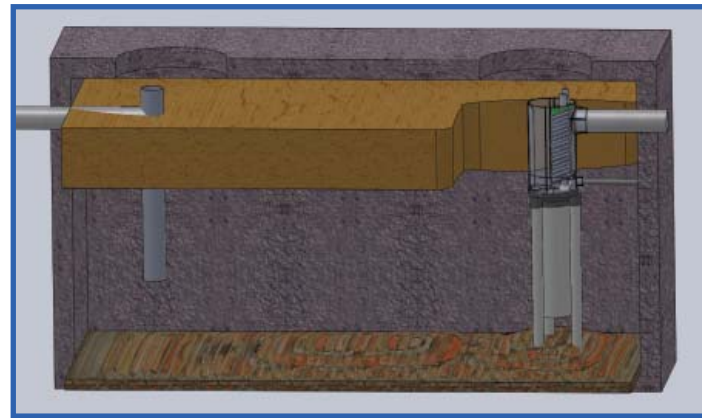
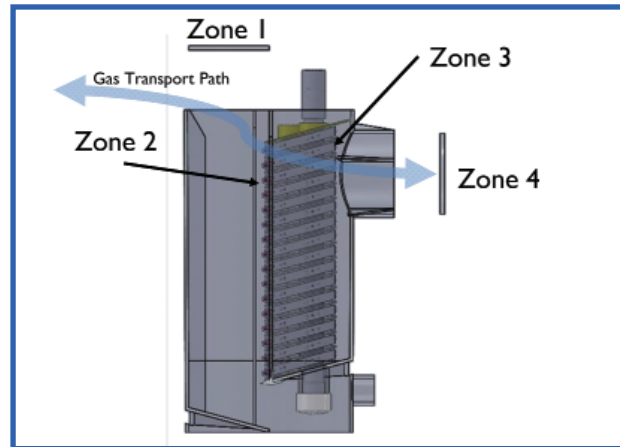
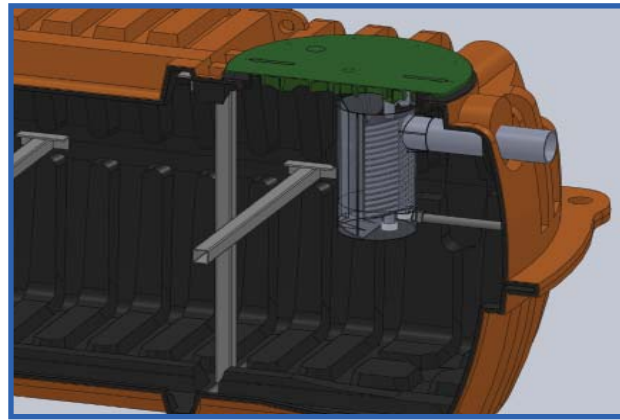
More research is needed in order to draw any definitive conclusions. However, Bear Onsite's patented filter designs have more square inches of open area above the outlet invert, into the filter case and out through the filter, which allows effluent gases to move freely in and out of the pre-treatment tanks than any other filtering device currently on the market. (Please refer to chart on back of this brochure)

For applications that need extra filter support, or for installations when it's necessary to extend the inlet level of the outlet filter case, BEAR ONSITE™ now offers the multi-purpose case adapter.

When a ML3-925 or 932 is used in a grease interceptor tank (pictured below) the inlet to the case should extend to approximately one foot from the bottom of the tank.

As the filter does the work of trapping grease in this application, it can become quite heavy; however, the unique design of the case adapter allows the installer to easily build support legs using common 2-inch Sch 40 PVC pipe.

This design, with the support legs separate and outside of the support/extension pipe, also eliminates the tendency for the support/extension pipes to fill with solids and block the flow to the case and filter.



Black & Blue
 910 & 916

These two filter models, with respective final filtration levels of 1/10th of an inch (black lid) and 1/16th of an inch (blue lid) are the "work horses" of the onsite industry. Although more and more crossover uses for these filters are being reported, these sizes remain the ones most often used for residential and commercial sanitary wastewater filtration.

Brown & Green
 925 & 932

These two filter models, with respective final filtration levels of 1/25th of an inch (brown lid) and 1/32nd of an inch (green lid), are designed for specialty onsite applications, in addition to being crossover products for the municipal wastewater market. When the installation calls for the need to protect small orifices or spray nozzles on pressure distribution systems, these are the filters of choice. These two filters stand up to a wastewater source that is high in fats, oils & grease (FOG), or ones with a high content of hair and/or lint. Outside of wastewater applications, the ML3-925 filter is the perfect choice for filtering rainwater in the emerging Rain Water Harvesting Market.



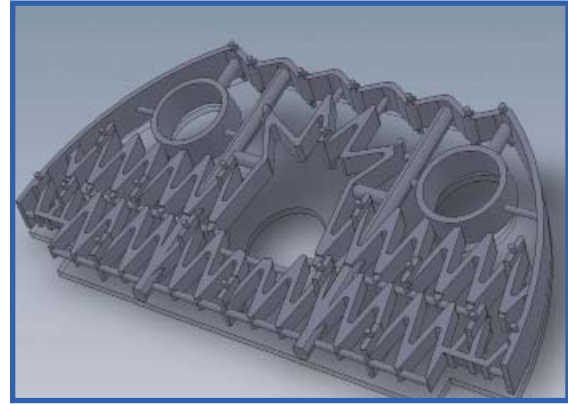
Yellow & Red
 948 & 964

Due to their ultra-filtration levels of 1/48th of an inch (yellow lid) and 1/64th of an inch (red lid), these specialty filters are better suited for industrial applications where constant monitoring is available. Yet, this same high level of filtration also makes these filters great choices in regions such as the sensitive environment of the Florida Keys or Chesapeake Bay areas, where tertiary filtration applications following advanced treatment systems are used.

There's a History Here...

BEAR ONSITE™ was just formed three years ago, but owner and founder Theo Terry has more than twenty-five years of experience in the onsite industry, first as a regulator, then in management and product design for international companies Zabel Environmental Technology and Ring Industrial Group.

From his early days as an environmentalist with the health department in his native Kentucky, Terry has developed a fascination and affinity with the industry, and discovered his niche in bringing innovative products to the wastewater market. Terry currently holds thirteen United States patents, and another six are pending. Many of Terry's designs are found in the portfolios of other familiar onsite companies such as Zabel Environmental Technology, Quanics, Best Technology, Ring Industrial Group and Infiltrator Systems.



*50 Years in the Making:
 The Patented Multi-Level Baffle Design!*



Presentations & Training

Terry has long been an advocate for meaningful training and continuing education for onsite professionals. So much so, that he worked with and encouraged several groups of onsite professionals to form their own state associations. Terry has served on the Boards of the Kentucky Onsite Wastewater Association (President, 1994-1996), the Tennessee Onsite Wastewater Association (President 2009-2010), and Georgia Onsite Wastewater Association. Terry also served as founding President of the Association for Installers and Manufacturers, a not-for-profit national onsite association designed to provide regional training opportunities across the United States. Today, he is a frequent speaker at trade shows and conferences both in the United States and Canada, sharing his industry insights, as well as his considerable knowledge about effluent filters with his presentation, "The Evolution of Effluent Filters".

Find the Bear in Your Neck of the Woods

BEAR ONSITE™ is available from these fine national/international retailers:



To find a local retailer or to become a distributor, visit us online at www.BearOnsite.com.